

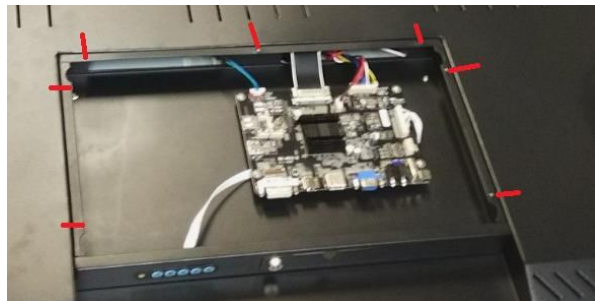
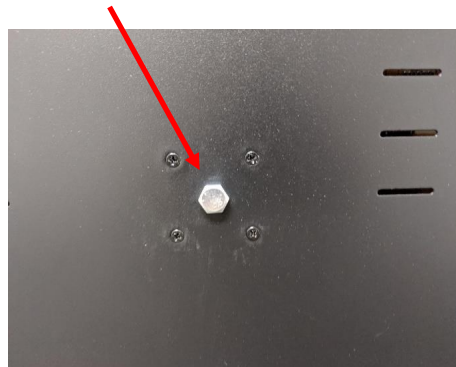
Monitor will need to be laid flat on its front:



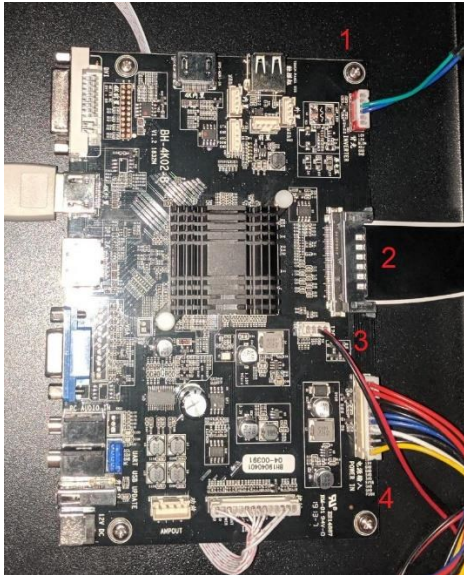
Once on its front, 24 screws will need to be removed from around the perimeter of the display, as well as an additional 16 screws from around each of the VESA mounting positions and 7 screws removed from an access panel for the AD board, note: bolts are hand tightened and can be removed without a tool:



VESA mounting , bolt should be hand tight



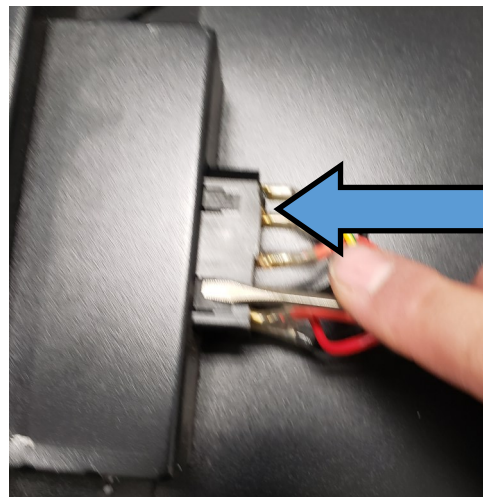
Once all of the screws are removed unplug cables 1—4 on the A/D board and tuck them inside of the back cover to allow you to remove the A/D board mounting panel and set aside.



Lift the back cover of the monitor from the top edge (opposite of power cord receptacle) being careful not to pull the wiring connecting the power supply board and the receptacle. Unplug CON 1 from the power supply board and remove the screw holding the yellow/ green wire from the power supply mounting panel



Use a flat blade screw driver to depress the two exposed locking tabs on the power receptacle and push towards the outer edge of the monitor. There are two more locking tabs on the opposite side of the receptacle depressing those will allow the receptacle to be completely removed from the metal monitor housing.



Push this direction

Once the receptacle has been removed insert the new socket into the hole on the monitor housing and mark the position of the mounting holes using a marker. Remove the socket plate and drill the holes using a 9/64 drill bit.



Remove all metal shavings from the drilled holes, insert the socket into the hole in the monitor housing, insert the included 6/32 Pem studs through the holes drilled previously and secure on the inside of the housing using the supplied 6/32 lock nuts. Then reassemble the monitor in reverse order.

