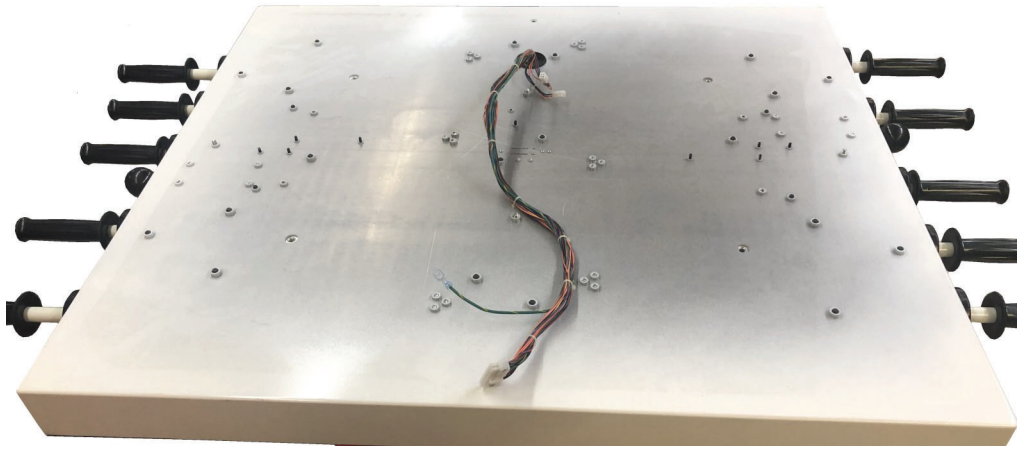


Step 1: LED Light Kit update

It is recommended to locate a box that will accommodate the dome so that you can flip the entire upper part of the game over. The dome should sit inside the box so that the surface will not be scratched when installing the LED kit.

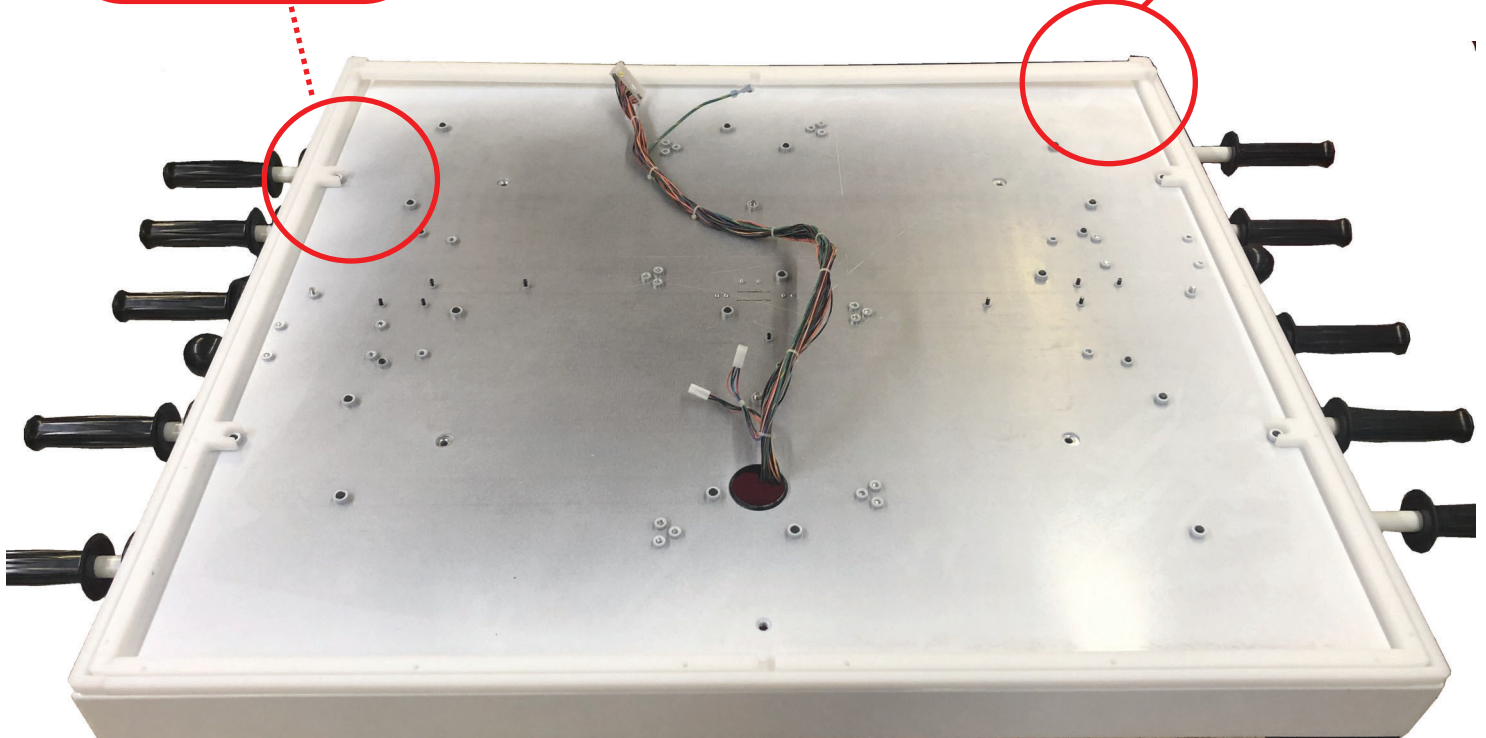


Step 2:

Position the pieces around the edges with the grooves at the top.

Lock the corners as shown.

The sides lock in around the pegs.



Step 3:

Only on one of the LED strips and at the ends with the wire harness remove a small section as shown below. DO NOT REMOVE MORE THAN THIS. If more is removed, you will not be able to insert the LED strip in the groove.



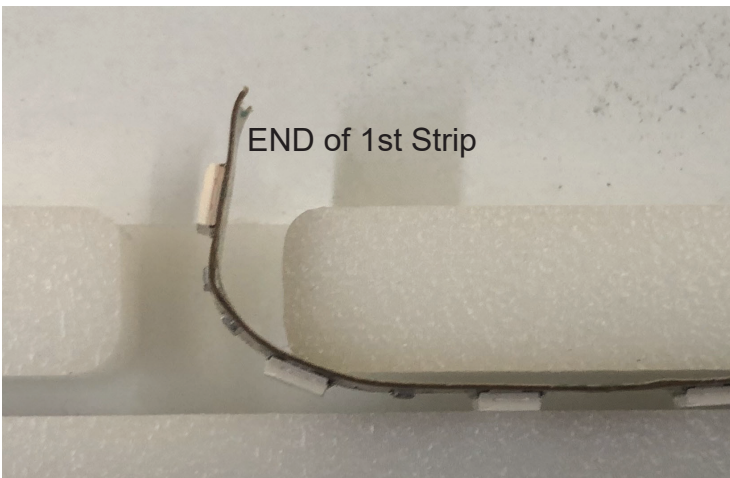
Step 4:

Wrap the LED strip so that the backside adheres to the plastic and only one LED chip is facing the inside of the channel as shown below. Give the LED a slight push to ensure good adhesion.



Step 5:

Insert the LED strip carefully into the grooves with the LED's facing outward. Continue until you reach the end of the strip.



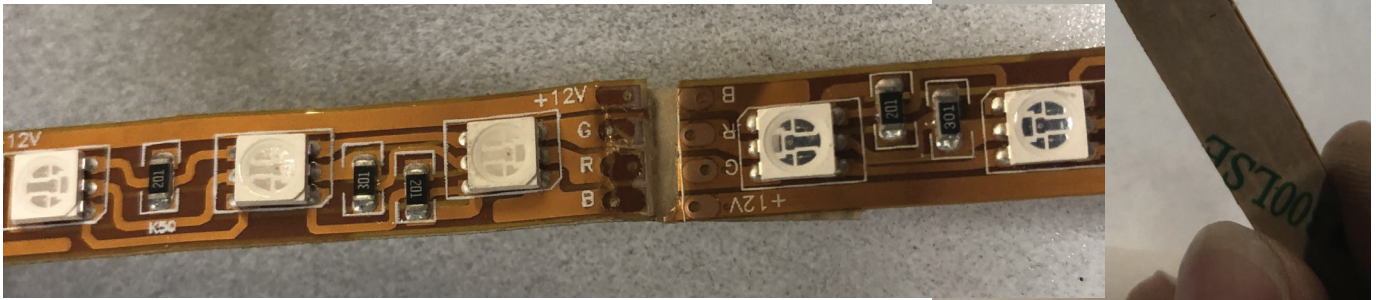
Step 6:

Using masking tape, secure the LED strips from coming out by taping making sure that the tape is not on the outside and visible. It will remain when all is finished.



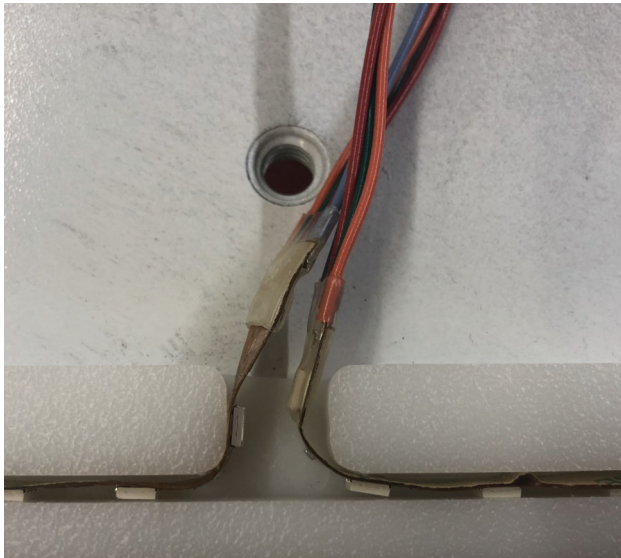
Step 7:

Remove the backing off the other roll of LED's, attach this to the previous roll.



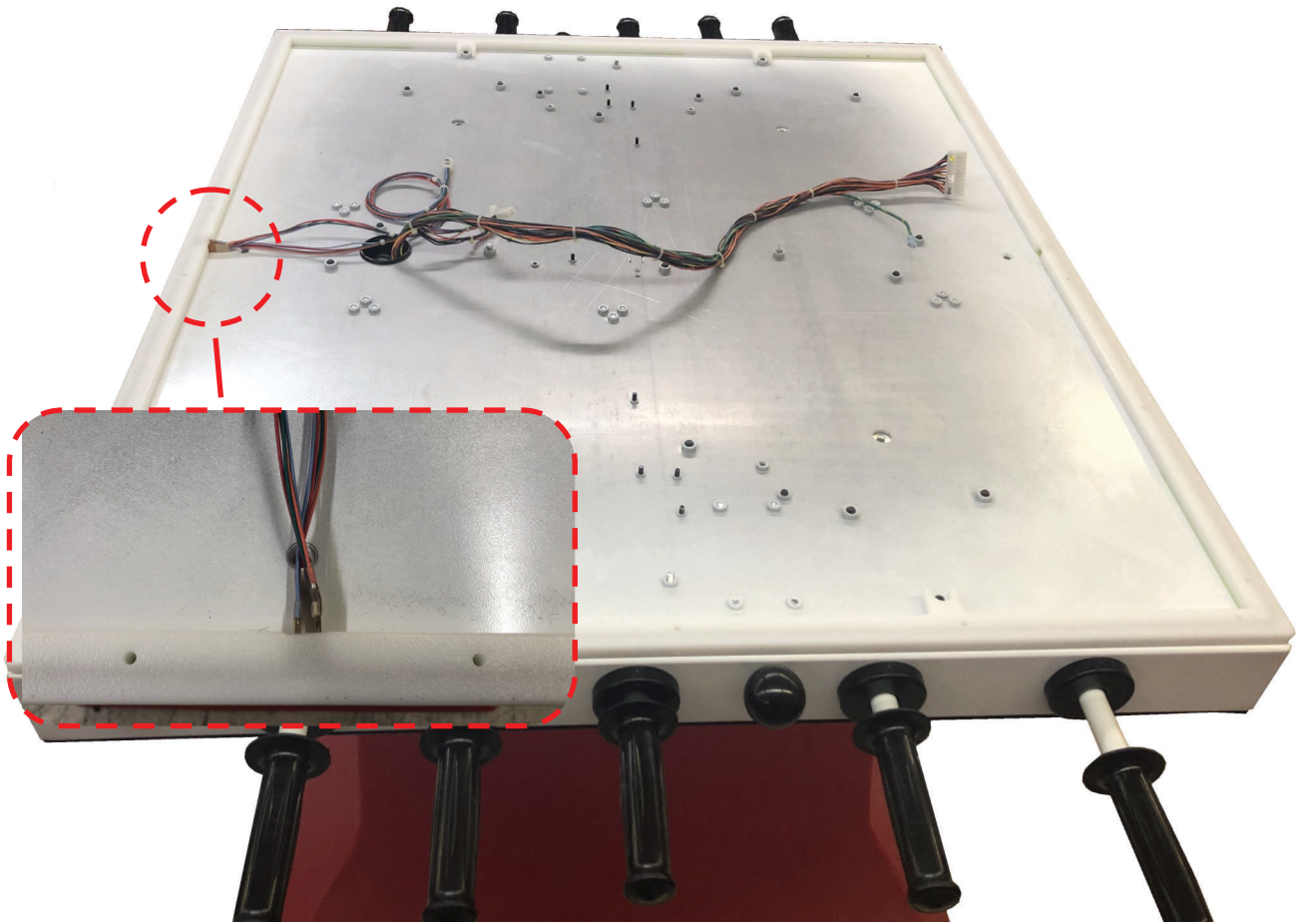
Step 8:

Continue to insert the LED roll all the way around until you reach where you started. Then using masking tape, secure the LED strips.



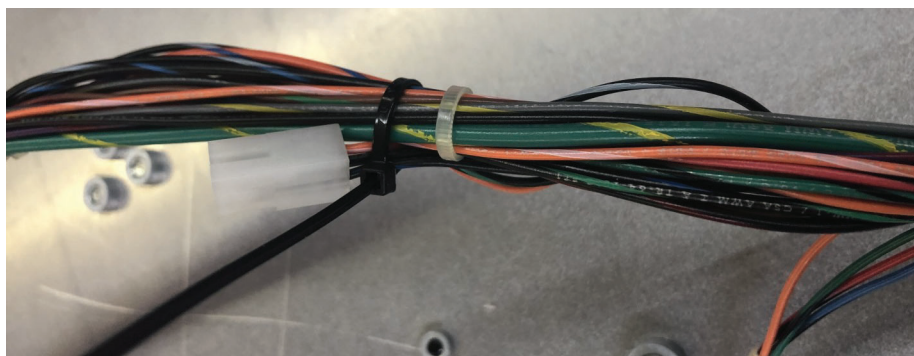
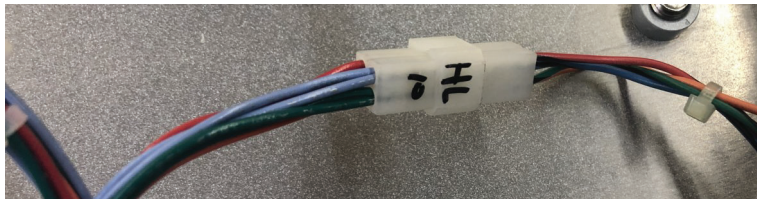
Step 9:

Flip the assemble over. The LED connections should be nearest to where the wires come from the playfield.



Step 10:

Connect the LED connector to the main harness. The wires will match colors. Then wire tie the wires that are loose.



Step 11:

Using the self tapping screws (6681) to attach the LED frame to the game's underside.



Step 12:

Then attach the wire harness connector cover. Be careful of where it is mounted so that the screws do not punch through the wire harness on the other side and they do not end up into the rail cover. Then flip the playfield over and reattach to the game.

