



Split Base Instructions

INNOVATIVE CONCEPTS IN ENTERTAINMENT INC.

10123 MAIN STREET, CLARENCE, NY 14031

SERVICE: 1-716-759-0360

FAX: 1-716-759-0884

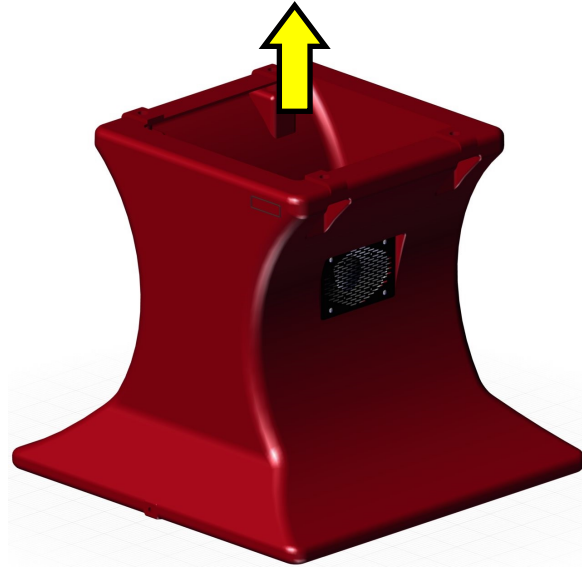
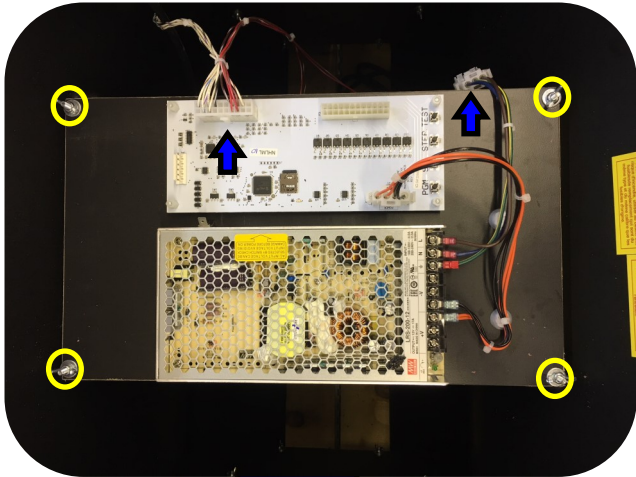
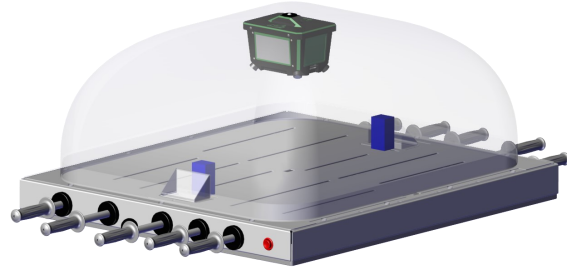
E-MAIL: service@icegame.com

WEBSITE: www.icegame.com

Support Videos: www.icechexx.com/topic/videos

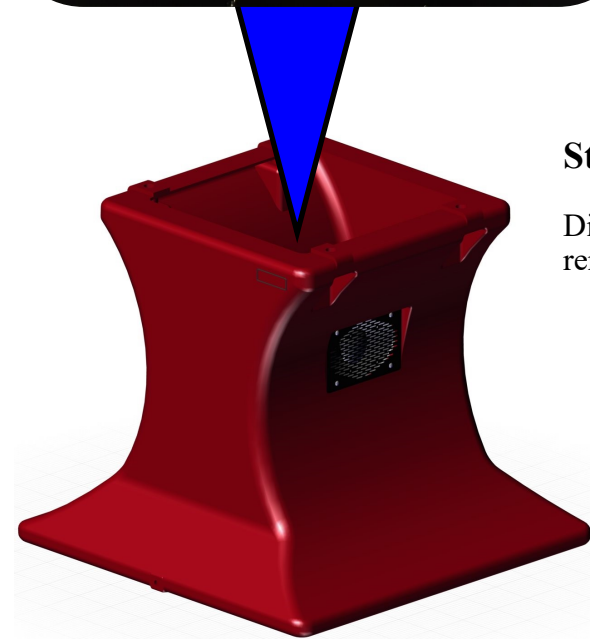
Step 1: (How to Split the base)

The game must be ordered as a split base. Not all games manufactured are split base. If the game is fully assembled, separate the top assembly from the bottom and put the top assembly aside.



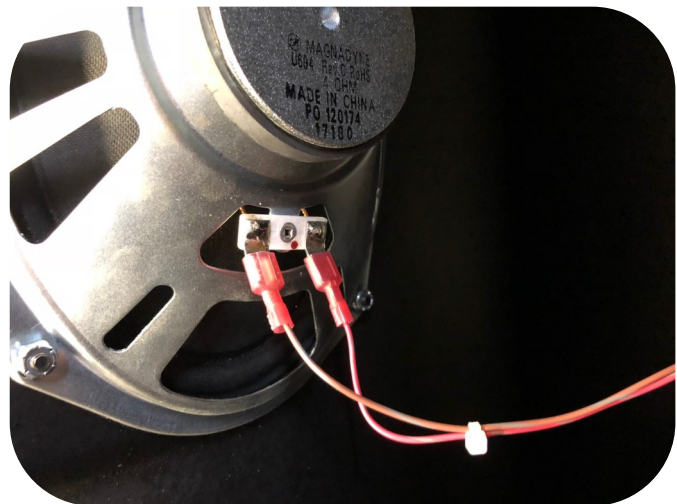
Step 2:

Disconnect the wire harnesses shown with the arrows. Then remove the four wing nuts circled and put PCB assembly aside.



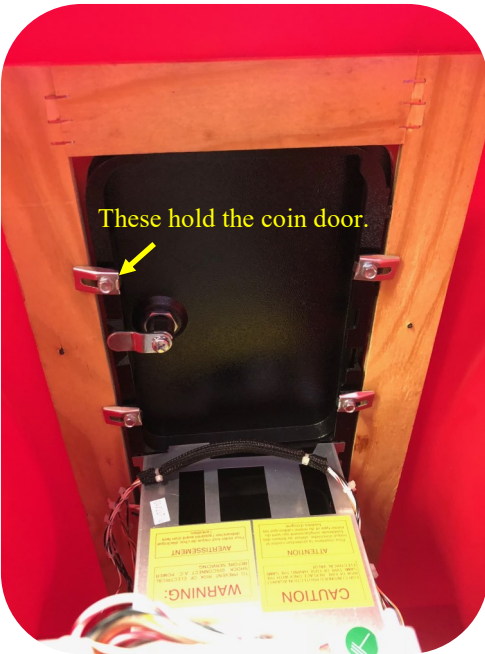
Step 3:

Disconnect the wires that connect to the speakers. Note which wire connects to the lug with the red dot (it's a red with a color strip).



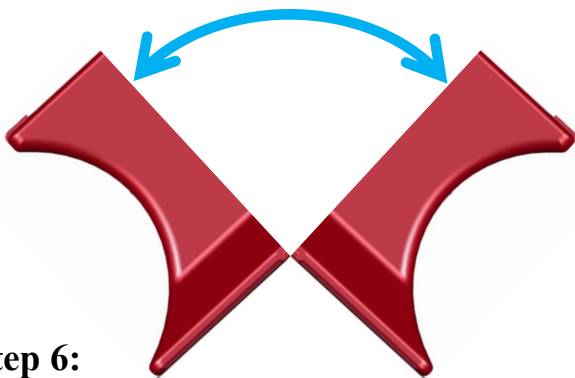
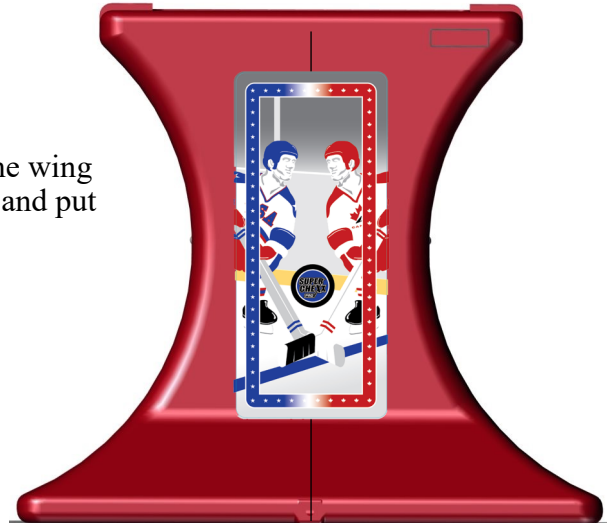
Step 4:

If your game has a coin door installed, you will have to remove the coin door and the mounting frame. The mounting frame is held onto the base with 655 Square screws (blue arrows). Disconnect all wiring to the coin door, then remove the coin door first. See yellow arrows (8 total bolts). Then remove the mounting frame.



Step 5:

If your game has plates on each side you must remove the wing nuts that hold them to the cabinet. Remove both plates and put aside.



Step 6:

The cabinet is hinged at the bottom to allow it to split as shown. Re-assembly in reverse.