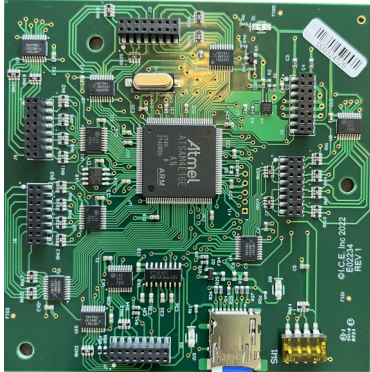


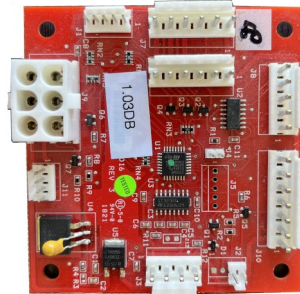
# Safety Sensor Update Kit

This kit comes with both an updated brain board and I/O board. Do not discard the old boards. They must be returned to ICE for credit. In addition to the new brain and I/O board, one TL2099LX harness, and one TL2138X sensor.

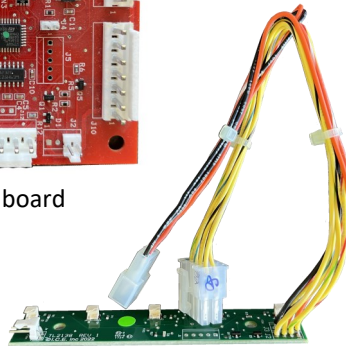
Kit includes:



E02234XX Brain board



TL2037X I/O board



TL2138X Receiver board



TL2099LX Harness

This kit is offered to you free of charge once the original brain board and I/O boards are returned to ICE for credit. This update is extremely important to the safety of the player.

If the safety sensor fails it will shut down the game and display "SENSOR".

The updated sensors produce a "heart beat" that the brain board must see in order for the game to be operational. In addition to this, if the sensor is unable to see any bags, it will shut the game down and display "BAGS".

See last sheet for updated Error codes.

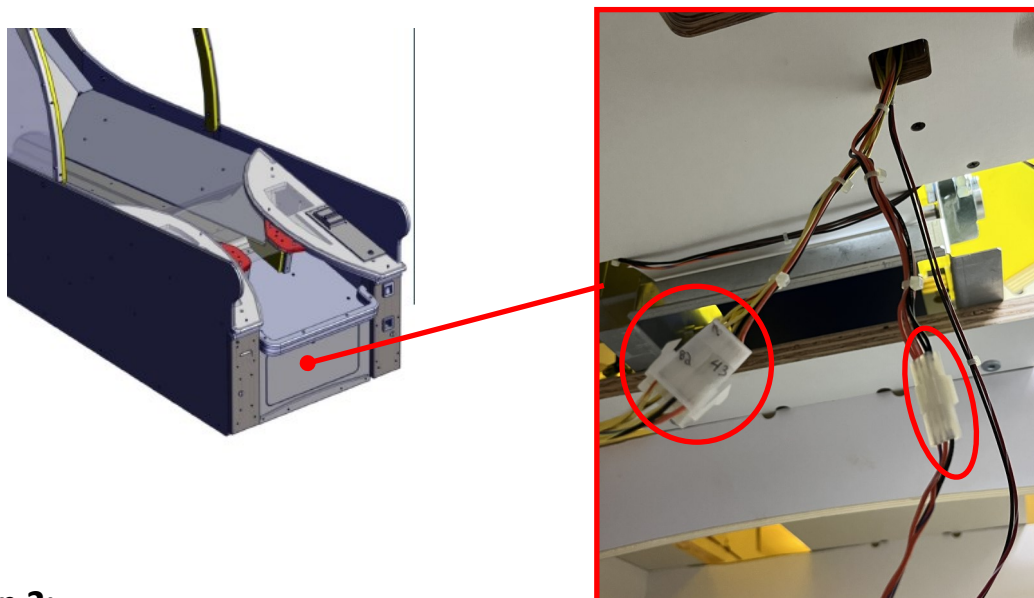
Any Questions? Please contact or tech support or use our Support page for more details.

<https://Support.icegame.com/hc/en-us/requests/new>

Innovative Concepts in Entertainment  
10123 Main Street  
Clarence, New York 14031

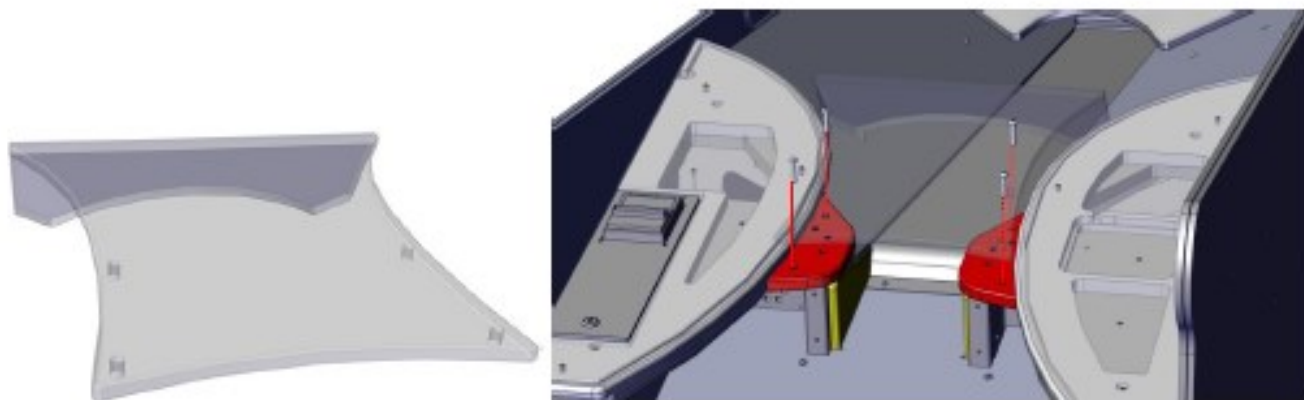
**Step 1:**

Power OFF game. Open front of cabinet and disconnect TL2038 sensor harnesses.



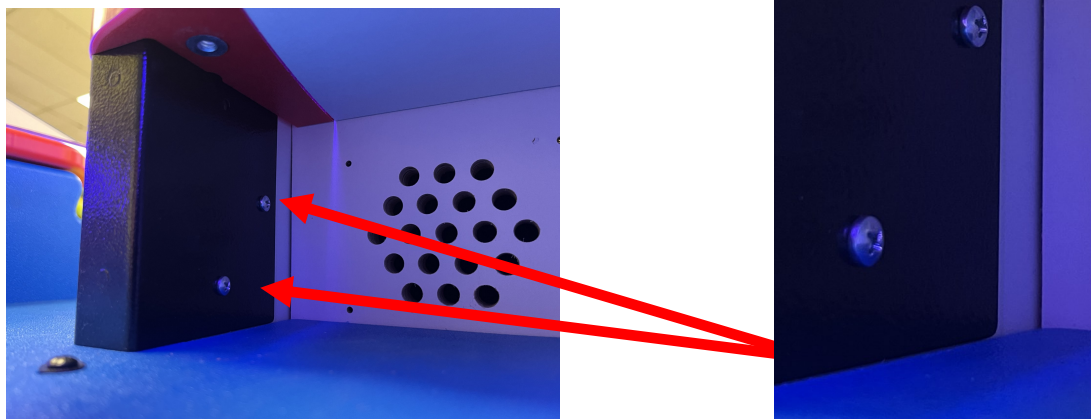
**Step 2:**

Remove the top Clear plastic shield and unscrew the woodscrews.



**Step 3:**

Unscrew the screws holding the right metal bracket.



#### Step 4:

Remove the old sensor. It is not longer used nor compatible with your game.

#### Step 5:

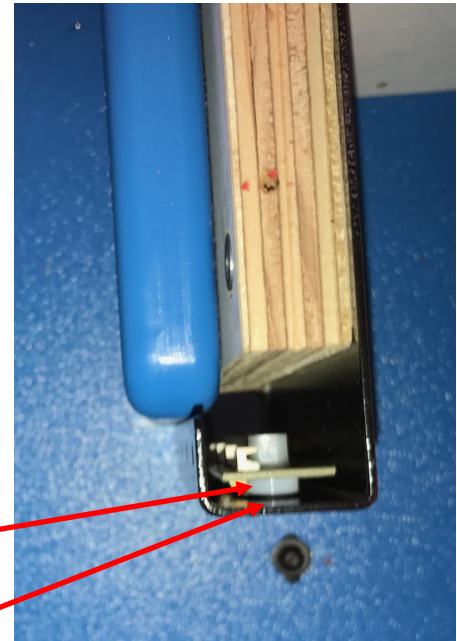
Install the new sensor reusing old hardware to mount.

THE RECEIVER has a metal washer and nylon spacer.

This is used to properly align the components to the holes in the metal bracket.

Carefully tighten the Nylon Hex nut to avoid damaging the surface mounted component on the circuit board.

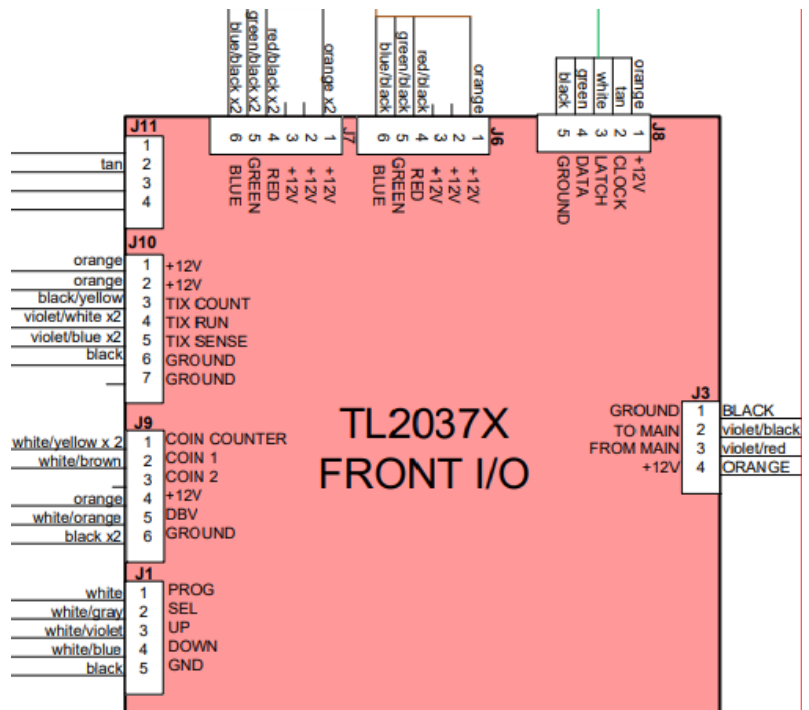
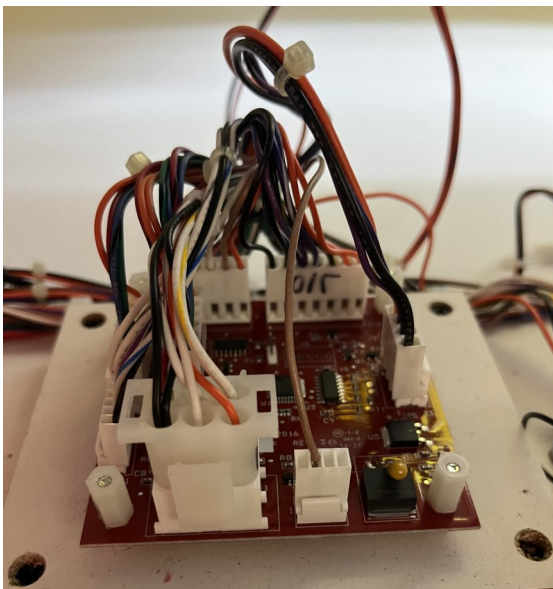
DO NOT USE A POWER DRILL.



Nylon Spacer  
Metal washer

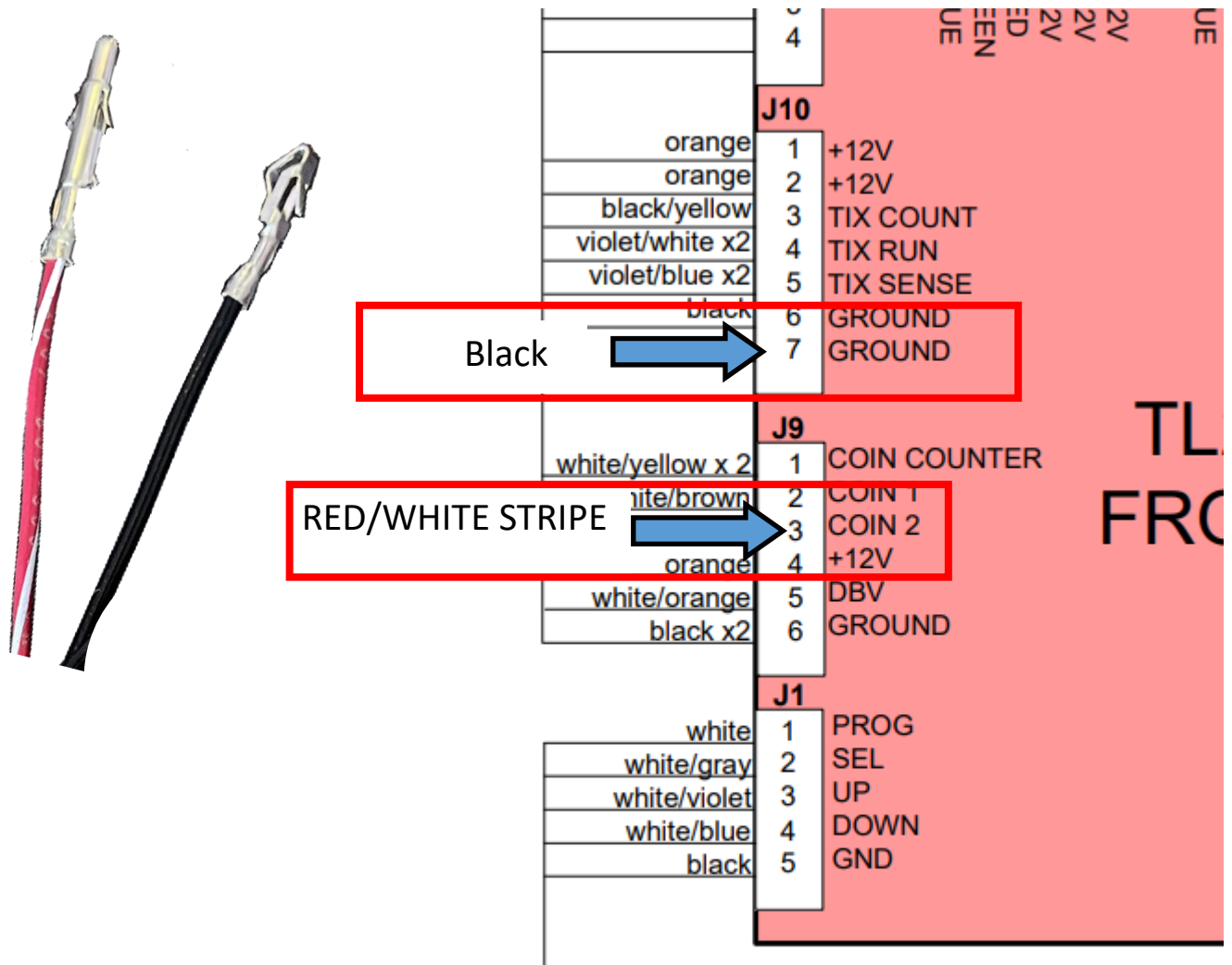
#### Step 6:

Replace the I/O board located at the front. Left is a picture of the board, right is the wiring diagram of all the harnesses used.



### Step 7:

Connect the two pins from the new harness into the front I/O board coming from the sensor.

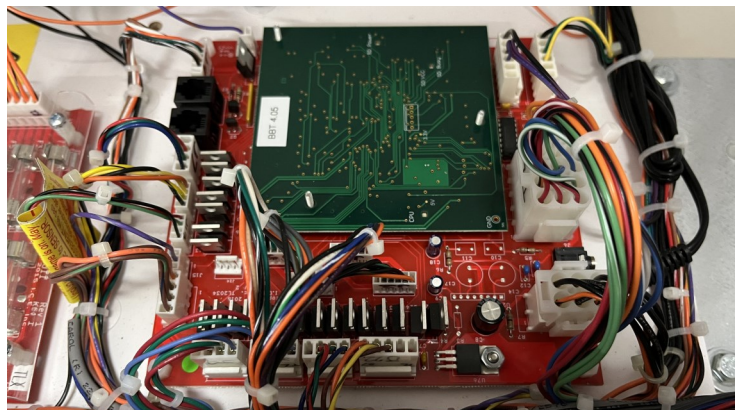


J10, pin 7 is for the black wire. Push the wire into the connector until it clicks.

J9, pin 3 is for the red/white strip wire. Push the wire into the connector until it clicks.

### Step 8:

Replace the brain board at the back of the game.



## Step 9:

Test to make sure the Transmitter and Receivers are communicating and in alignment with each other before reinstalling the clear safety shield.

### New Power on ERROR CODES

When AC power is applied, some devices will do a self-test. The following error codes can be displayed:

Error 1	SD card Error	Error 2	Wheel Blue Sensor Error on
Error 3	Wheel Green Sensor Error on	Error 4	Wheel Red Sensor Error on
Error 5	Wheel Blue Sensor Error off	Error 6	Wheel Green Sensor Error off
Error 7	Wheel Red Sensor Error off	Error 8	No Wheel board Communication
Error 9	No Front board Communication	Error 10	Over Back Sensor Error
Error 13	No heartbeat from front I/O board.	Error 11 and 12	cannot occur on powerup.

### Resolving Error 13: (During game play it will display “SENSE”, not error 13)

Error 13 is generated if no heartbeat is seen meaning the coin 2 line has no pulses going to it. This could be caused by defective safety sensors, bad wiring, bad I/O board, or bad brain/main board.

### Resolving Error “TIC”:

Error 11 is generated when the game’s front I/O board doesn’t see any pulses on the ticket sense line when the ticket run line is enabled (at logic high).

### Resolving Error “BAGS”:

This error is generated when the safety sensors do not see any bags in five games.