
TIPPIN BLOKS

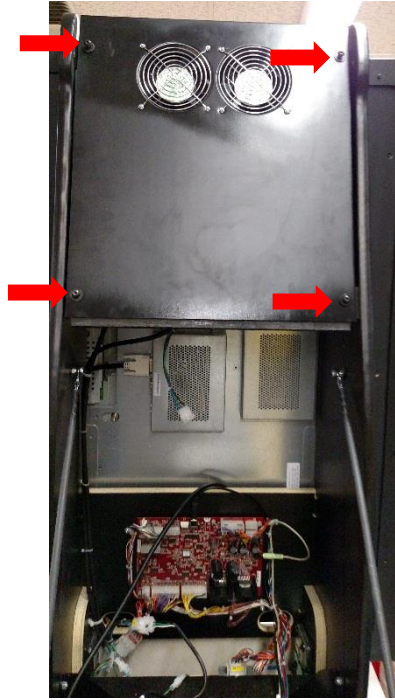
New PC Power Conversion Kit



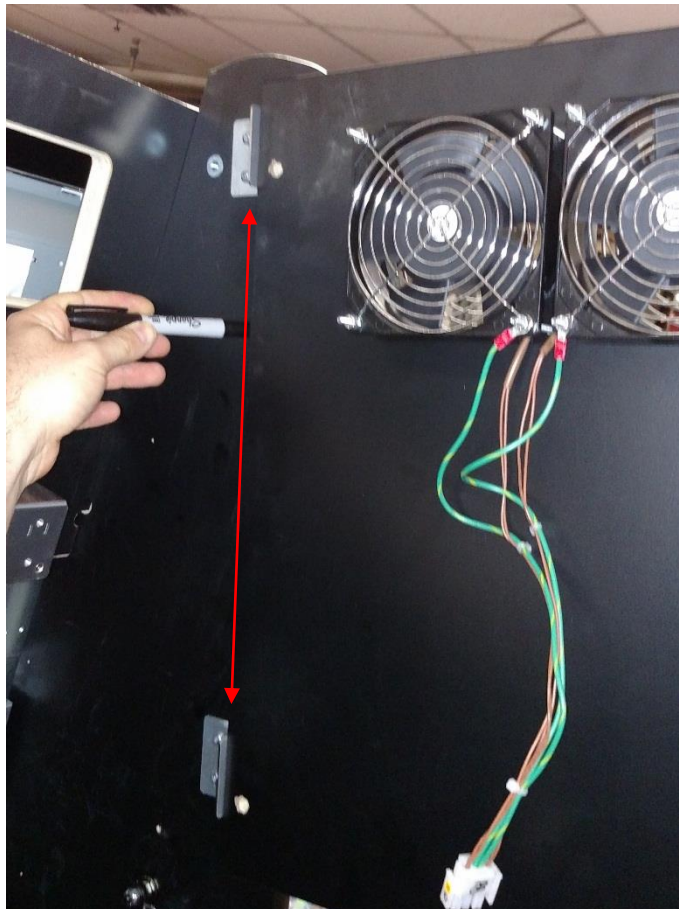
MAY 11, 2015

INNOVATIVE CONCEPTS IN ENTERTAINMENT

- 1.) Open up back of game and pull computer tray down. Take out the old computer and replace it with the one that you received.
- 2.) Take out four screws holding on the panel with the fans on it. Refer to Picture below.



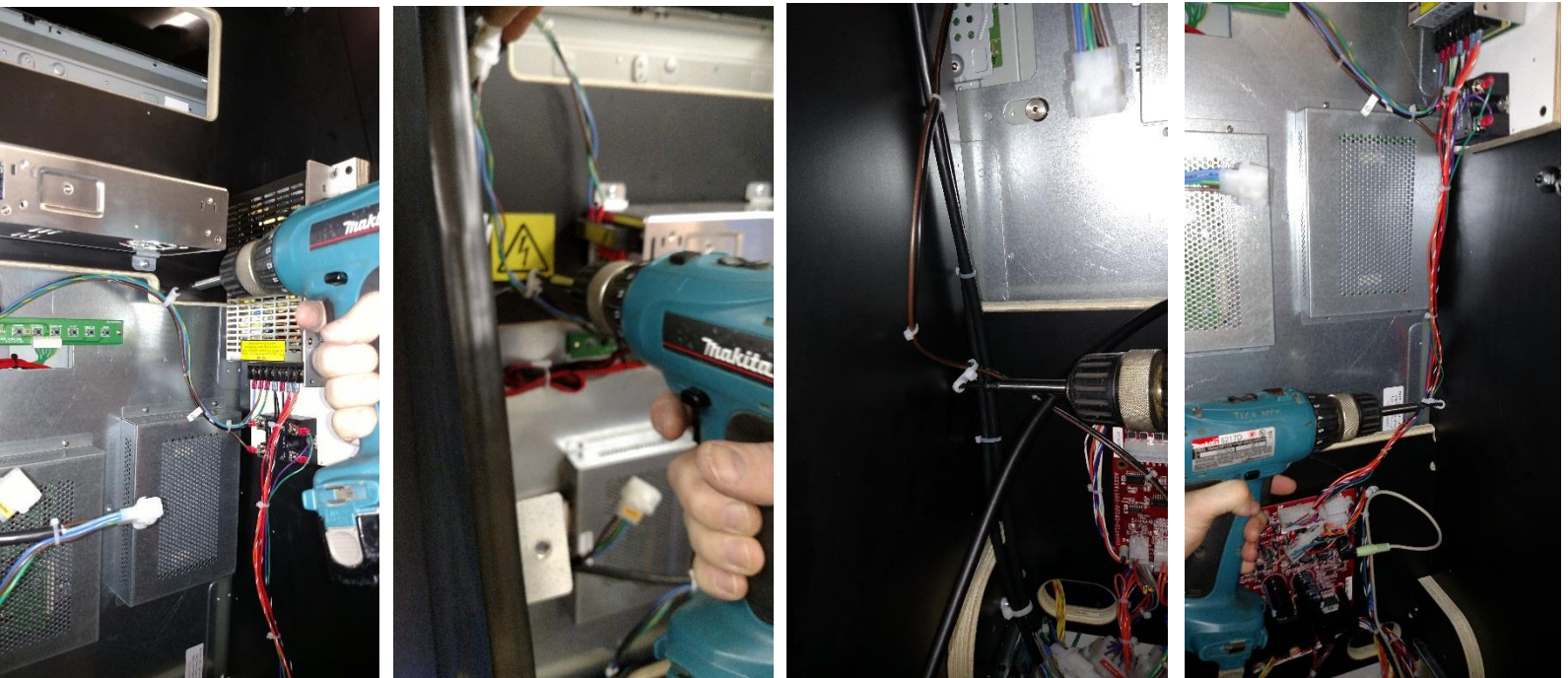
- 3.) Take the panel and hold it to the two metal brackets that held it on the right hand side. Take a marker and draw yourself a reference line from bracket to bracket.



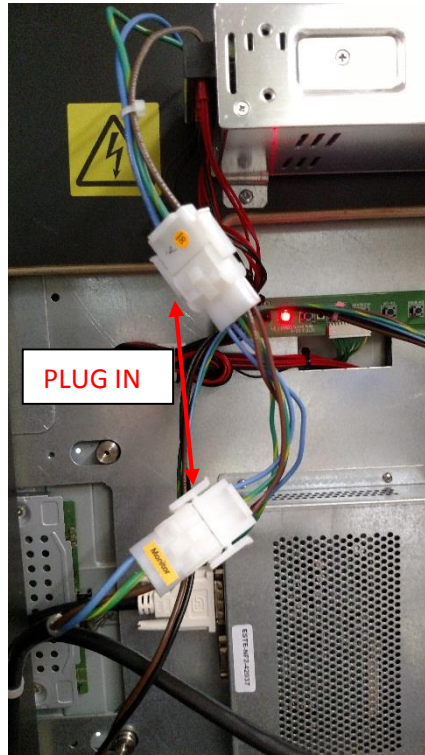
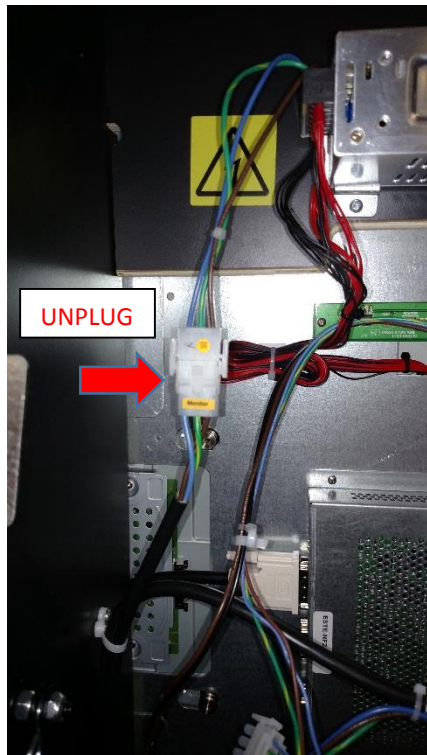
- 4.) Align the power assembly left of the line you drew. So that when the wood is installed the power assembly doesn't interfere with mounting. It's a tight fit you have to go higher than the screw with the chain on it (red arrow), high enough so the monitor power supply isn't in the way of the upper left hand screw (yellow arrow), but not too high so that the panel with the fans on it won't fit on properly (blue arrow) it is hard to see the line drawn in the picture.



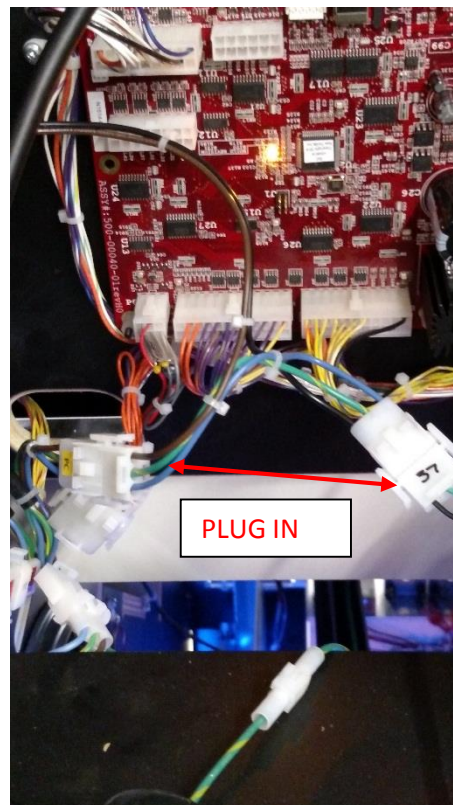
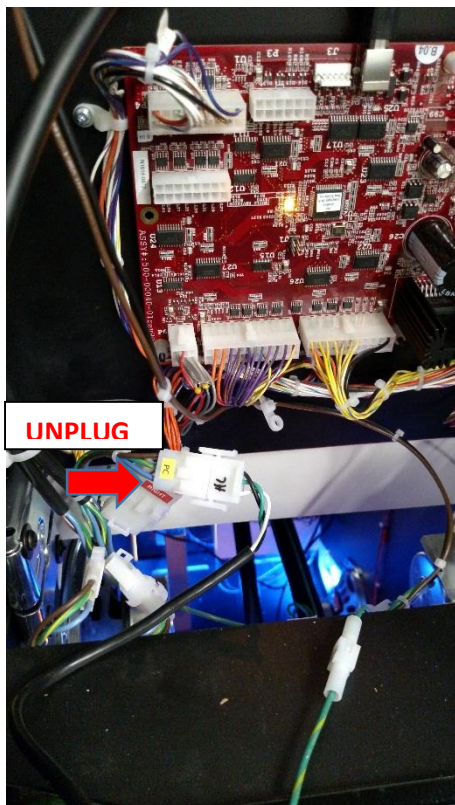
- 5.) Now route your harnesses and secure them as seen in the next couple pictures.



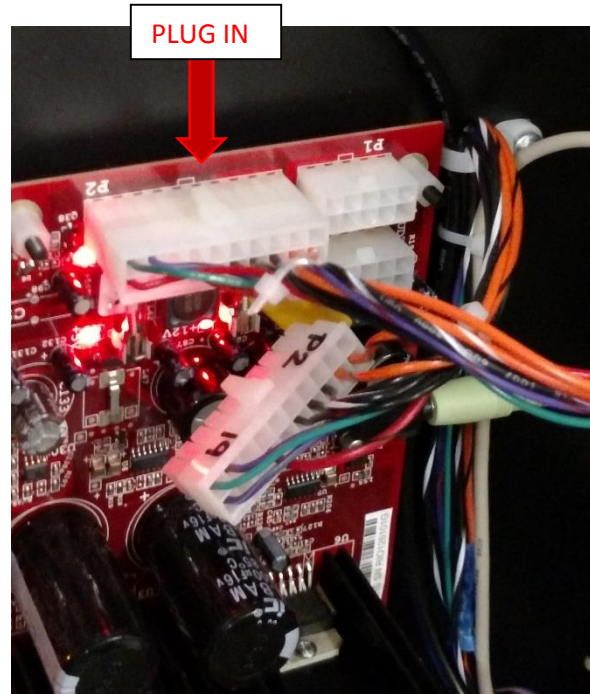
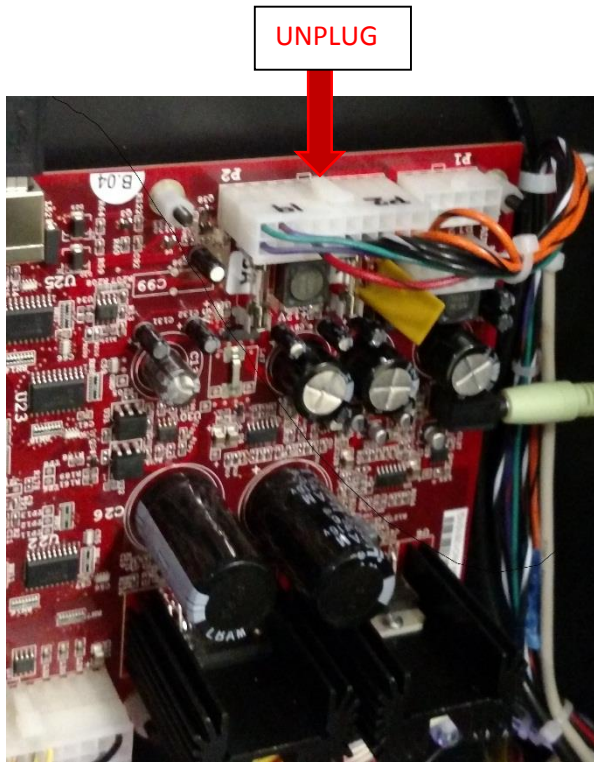
6.) Unplug the connector that says Monitor, and plug in the connector that goes to the power supply you just installed.



7.) Unplug the harness that says PC down by the red board. And plug in the connectors at the end on the longer brown and black wires.



- 8.) Unplug connector P2 on the board and plug in the new connector that goes up to the power supply that you just installed. You can take out the old harness P2 that goes to the computer, or you can leave it in the game unplugged it doesn't matter either way.



- 9.) Put the panel back on with the fans on it that you took off earlier and push the tray with the computer on it back up and secure it.

